

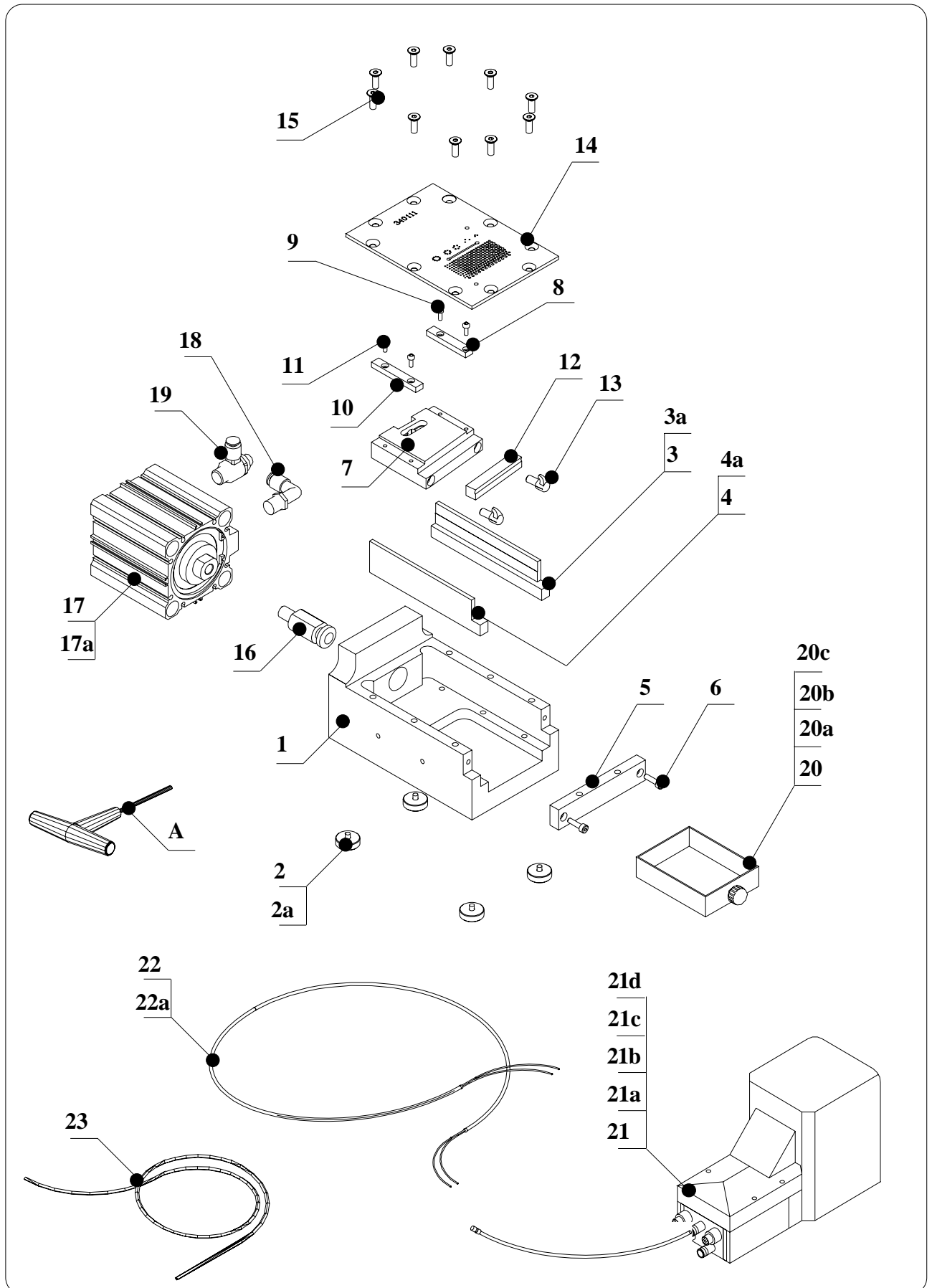


## - 11 - SPARE PARTS

### **11.1 WARNING FOR THE CUSTOMER**

Before ordering any particular spare part, it is always necessary to specify the serial number of the machine to which the part shall fit.

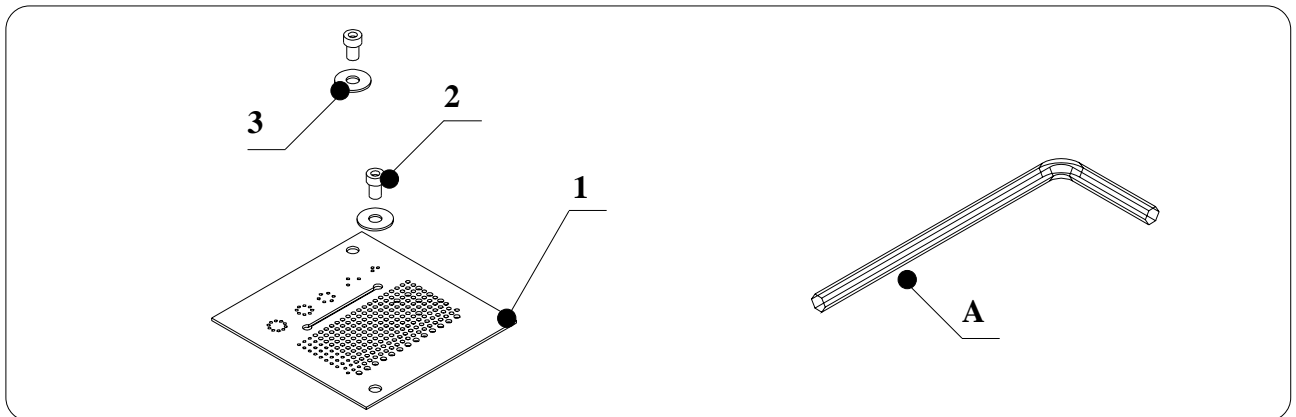
# 11.2 DETAILED DRAWING OF TP LN 500-1 34.0001



## 11.2.1 READING KEY FOR DETAILED DRAWING OF TP LN 500-1 cod. 34.0001

Pos.	Item	Description	Q.ty
1	340101	BODYMACHINETP/LN-500	1
2	150106	RUBBERFEETD.18	4
2a	400114	BHSCREWM4X8	4
3	340120	RIGHLOWERDELRINGUIDE(CUTTINGAREA52X43)	1
3a	930075	SCREWTCEIM4X20	3
4	340105	LOWERDELRINGUIDE(CUTTINGAREAMAX52X43)	1
4a	930075	SCREWTCEIM4X20	3
5	340110	FRONTPLATE TP/LN-500(CUTTINGAREA52X43)	1
6	750107	SCREWTCEIM4X12	2
7	340106	CARRIAGEFORCUTITNGBLADE TP/LN-500	1
8	340107	UPPERDELRINGUIDE	1
9	750503	SCREWTBEIM3X6	2
10	340119	DELRLNLEFTUPPERGUIDE	1
11	750503	SCREWTBEIM3X6	2
12	340109	CUTTINGBLADE TP/LN-500	1
13	340122	FIXINGBRACKETFORCUTTINGBLADE	2
14	340111	STATIONARYPLATE TP/LN-500(CUTTINGAREA52X43)H=3,2	1
15	750301	CS SCREWM5X12	10
16	340104	JOINT TP/LN-500	1
17	350206	CYLINDERECQ2B63-50D	1
17a	340116	CAPSCREWM8X90	4
18	150501	PLASTIC ELBOWCONNECTOR KQL-06-01S90° 1/4	1
19	350303	AIR REGUALTOR EAS2200F0206 1/4 LN1000	1
20	340117	PART BIN FOR TP/LN-500(CUTTINGAREA52X43)	1
20a	500032	KNOBM4X8	1
20b	750108	NUTM4	1
20c	950308	WASHERD.4	1
21	150509	PNEUMATIC PEDALAM50010B	1
21a	150512	SILENCER2901 1/4 17 ONAIR EJECT	2
21b	150514	PLASTICCONNECTOR KQH-06-02S 1/4	3
21c	150510	RILSAN HOSE D. 6X4L=mm 250	1
21d	350402	STRAIGHT QUICK COUPLING T.6X1 KQL-06-00 LN1000	1
22a	150521	POLYESTER SHEATH 20mm.	1
22b	150510	RILSAN HOSE D. 6X4L=mm 1800	2
23	150510	RILSAN HOSE D. 6X4L=mm 1800	1
<b>ADJUSTMENT TOOLSET</b>			
A	400804	ALLEN KEY mm. 3	11

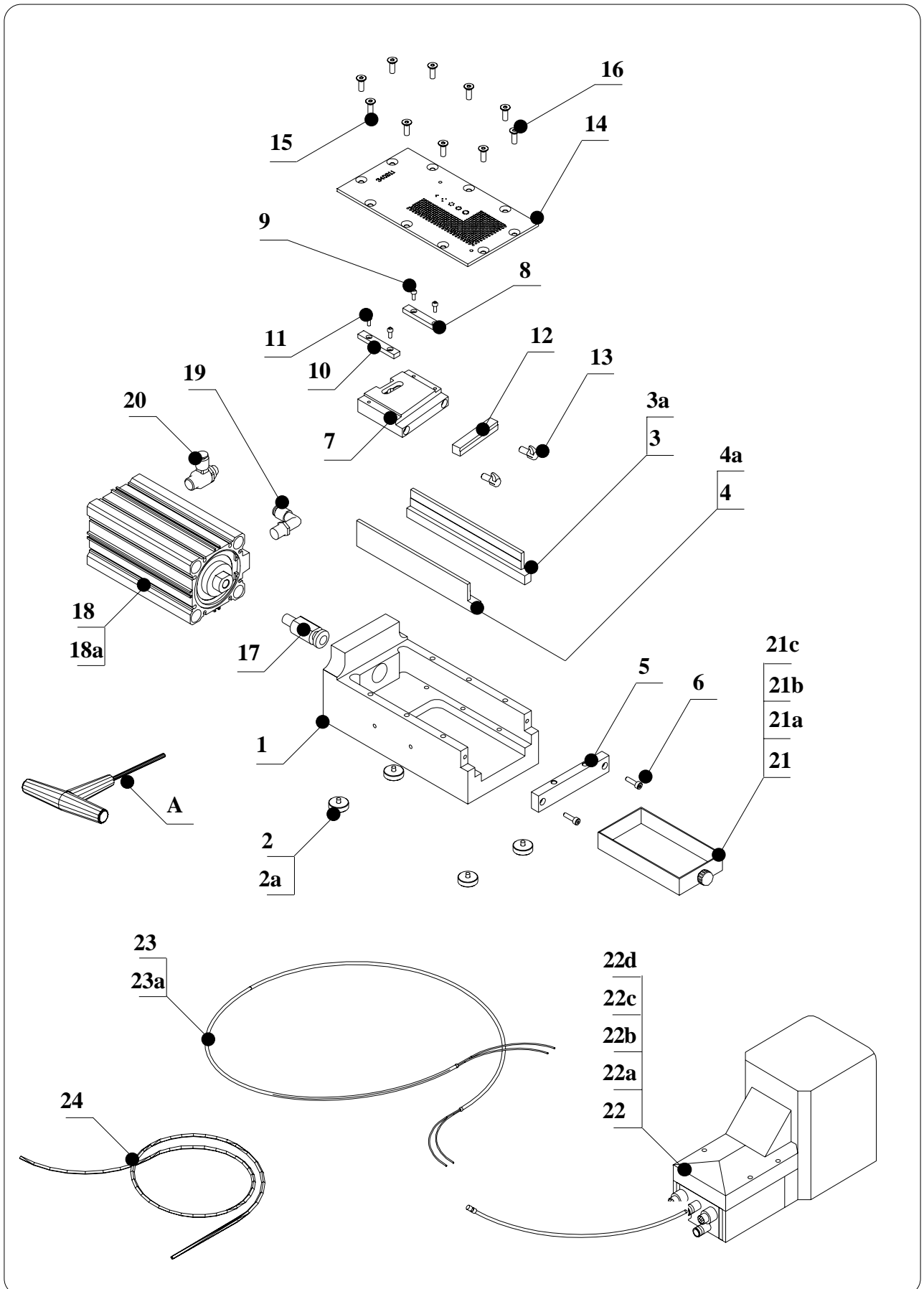
## 11.3 DETAILED DRAWING ADDITIONAL PLATE TP LN 500-1



### 11.3.1 READING KEY FOR DETAILED DRAWING ADDITIONAL PLATE TP LN 500-1

Pos.	Item	Description	Q.ty
1	340114	ADD.PLATE HEIGHT CHANGE H=0.5 (CUTT.AREA 52X43) FOR 340111	1
2	-----	SPECIAL SCREW TBEI M 4x4	2
3	-----	WASHER	2
1	34011416	ADD PLATE HEIGHT CHANGE H=1 (52X43) FOR TP/LN-500/1	1
2	-----	SPECIAL SCREW TBEI M 4x4.5	2
3	-----	WASHER	2
1	34011417	ADD PLATE HEIGHT CHANGE H=1.5 (52X43) FOR TP/LN-500/1	1
2	-----	SPECIAL SCREW TBEI M 4x5	2
3	-----	WASHER	2
1	34011418	ADD PLATE HEIGHT CHANGE H=2 [52X43) FOR TP/LN-500/1	1
2	-----	SPECIAL SCREW TBEI M 4x6	2
3	-----	WASHER	2
1	34011419	ADD PLATE HEIGHT CHANGE H=2.5 (52X43) FOR TP/LN-500/1	1
2	-----	SPECIAL SCREW TBEI M 4x6	2
3	-----	WASHER	2
1	34011420	ADD PLATE HEIGHT CHANGE H=3 (52X43) FOR TP/LN-500/1	1
2	-----	SPECIAL SCREW TBEI M 4x6.5	2
3	-----	WASHER	2
<b>ADJUSTMENT TOOL SET</b>			
A	350308		1

# 11.4 DETAILED DRAWING OF TP LN 500-2 34.0002



**11.4.1 READING KEY FOR OF TP LN 500-2 cod. 34.0002**

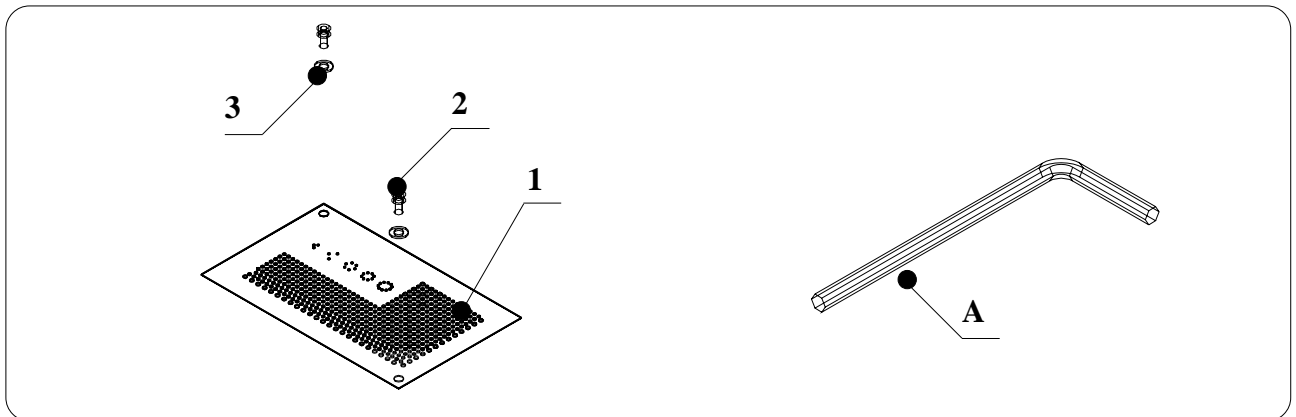


<b>Pos.</b>	<b>Item</b>	<b>Description</b>	<b>Q.ty</b>
1	34010101	MACHINE'S BODY TP/LN-500 SPECIAL 100mm	1
2	150106	RUBBER FEET D.18	4
2a	400114	BH SCREW M4X8	4
3	34012001	RIGHT LOWER DELRIN GUIDE (CUTTING AREA 52X93)	1
3a	930075	SCREW TCEI M4X20	3
4	34010501	LEFT LOWER DELRIN GUIDE (CUTTING AREA 52X93)	1
4a	930075	SCREW TCEI M4X20	3
5	34011001	FRONT PLATE (CUTTING AREA MAX 52X93)	1
6	750107	SCREW TCEI M4X12	2
7	340106	CARRIAGE FOR CUTITNG BLADE	1
8	340107	UPPER DELRIN GUIDE	1
9	750503	SCREW TBEI M3X6	2
10	340119	DELRIN LEFT UPPER GUIDE	1
11	750503	SCREW TBEI M3X6	2
12	340109	CUTTING BLADE TP/LN-500	1
13	340122	FIXING BRACKET FOR CUTTING BLADE	2
14	340211	STATIONARY PLATE (CUTTING AREA 52X93)H=3,2mm	1
15	750301	CS SCREW M5X12 CS SCREW M5X12	8
16	350205	CS SCREW M5X8	2
17	340104	JOINT TP/LN-500	1
18	340115	CYLINDER ECQ2B63-100D	1
18a	340121	CAPSCREW M8X90 FOR CYLINDER	4
19	150501	PLASTIC ELBOW CONNECTOR KQL-06-01S 90° 1/4	1
20	350303	AIR REGUALTOR EAS2200F0206 1/4 LN1000	1
21	34011701	PART BIN (CUTTING AREA 52X93)	1
21a	500032	KNOB M4X8	1
21b	750108	NUT M4	1
21c	950308	WASHER D.4	1
22	150509	PNEUMATIC PEDAL AM 50010B	1
22a	150512	SILENCER 2901 1/4 17 ON AIR EJECT	2
22b	150514	PLASTIC CONNECTOR KQH-06-02S 1/4	3
22c	150510	RILSAN HOSE D. 6X4 L= mm 250	1
22d	350402	STRAIGHT QUICK COUPLING T.6X1 KQL-06-00 LN1000	1
23a	150521	POLYESTER SHEATH 20mm L= mm 1500	1
23b	150510	RILSAN HOSE D. 6X4 L= mm 1800	2
24	150510	RILSAN HOSE D. 6X4 L= mm 1800	1

**ADJUSTMENT TOOLSET**

A	400804	ALLEN KEY mm. 3	11
---	--------	-----------------	----

## 11.5 DETAILED DRAWING ADDITIONAL PLATE TP LN 500-2



### 11.3.1 READING KEY FOR DETAILED DRAWING ADDITIONAL PLATE TP/LN-500-2

Pos.	Item	Description	Q.ty
1	340214	ADD.PLATE HEIGTH CHANGE H=0.5 (52X93)FOR 340211-TP/LN500/2	1
2	-----	SPECIAL SCREW TBEI M 4x4	2
3	-----	WASHER	2
1	34021401	ADD. PLATE HEIGHT CHANGE H=1 (52X93) FOR TP/LN-500/2	1
2	-----	SPECIAL SCREW TBEI M 4x4.5	2
3	-----	WASHER	2
1	34021402	ADD. PLATE HEIGHT CHANGE H=1.5 (52X93) FOR TP/LN-500/2	1
2	-----	SPECIAL SCREW TBEI M 4x5	2
3	-----	WASHER	2
1	34021403	ADD. PLATE HEIGHT CHANGE H=2 (52X93) FOR TP/LN-500/2	1
2	-----	SPECIAL SCREW TBEI M 4x6	2
3	-----	WASHER	2
1	34021404	ADD. PLATE HEIGHT CHANGE H=2.5 (52X93) FOR TP/LN-500/2	1
2	-----	SPECIAL SCREW TBEI M 4x6	2
3	-----	WASHER	2
1	34021405	ADD. PLATE HEIGHT CHANGE H=3 (52X93) FOR TP/LN-500/2	1
2	-----	SPECIAL SCREW TBEI M 4x6.5	2
3	-----	WASHER	2
<b>ADJUSTMENT TOOLSET</b>			
A	350308	SPANNER E 2,5mm	1